



OEE Audit Release Note

Version 1.2.0

Deb-Tech Systems, Inc.

Debbie.Olk@DebTechSystems.com

847.854.3148

OEE Audit v1.2.0

In order to support the new Vorne v1 firmware, you must upgrade to the latest **XL Bolt-on Data Collector** version 1.7.8.0 and to **OEE Audit** version 1.2.0.0.

<http://www.sulzerconsulting.com/downloads/vorne/XL Bolt-On Data Collector.zip>

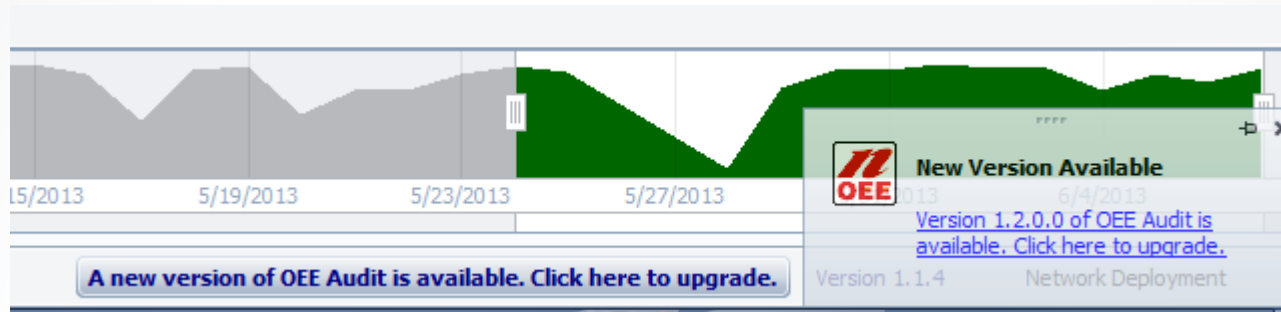
Version 1.2.0.0 of OEE Audit supports all versions of Vorne XL device firmware.

Smart Installation

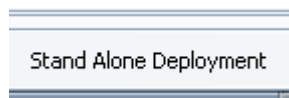
<https://oeeauditinstall.blob.core.windows.net/release/v1/setup.exe>

If you have questions or need assistance, please contact either
Debbie Olk (OEE Audit or custom reports)
or
Jim Sulzer (XL Bolt-On Data Collector).

OEE Audit now supports the new Vorne v1 firmware



OEE Audit version 1.2.0.0 is available for upgrade.
Click on the link that you see when you launch OEE Audit.



If you have utilized the Manual Installation method ~ you can download and install this version ~

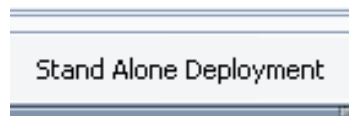
www.oeeaudit.com/OEEAuditSetup_01_02_00.zip



OEE Audit now supports the new Vorne v1 firmware

OEE Audit version 1.2.0.0 is available for upgrade.

If you have an older version that was manually installed, please uninstall that version of OEE Audit before installing this version. This can be determined by looking at the bottom right of the OEE Audit software.



If you have utilized the Manual Installation method ~ you can download and install this version ~

Manual Download & Installation

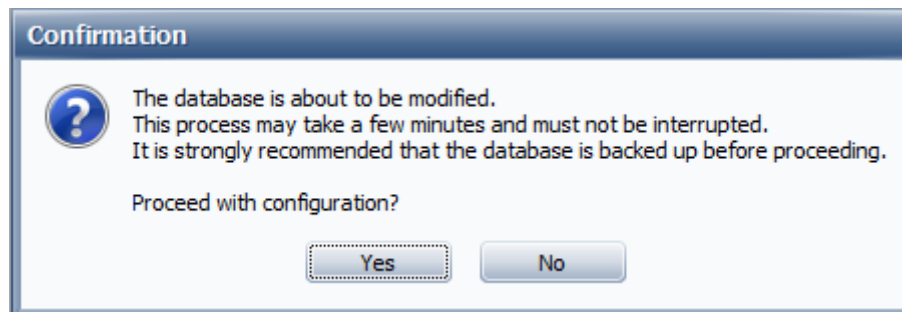
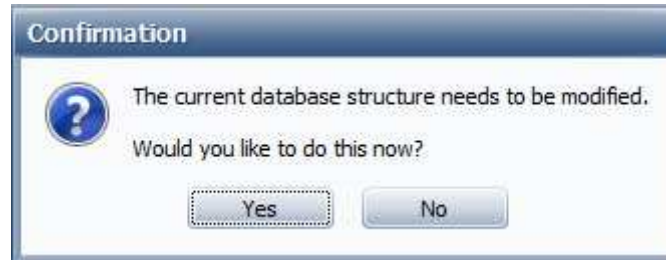
www.oeeaudit.com/OEEAuditSetup_01_02_00.zip



Smart Installation

<https://oeeauditinstall.blob.core.windows.net/release/v1/setup.exe>

OEE Audit will update the database to support the new table structures.



This is done only once and by the first person that upgrades to the new release.

Contact Us

- As the Vorne Authorized Reporting Consultants, we provide customized reporting solutions, including working with data from your ERP/MRP systems.
- In addition to customized reporting, we provide support and customization for the [OEE Audit](#) reporting software (designed specifically for the data captured from the Vorne XL devices).

Debbie Olk, CSM

Deb-Tech Systems, Inc. ~ Algonquin, Illinois ~ 847.854.3148 (o)
Debbie.Olk@debtechsystems.com

www.DebTechSystems.com